



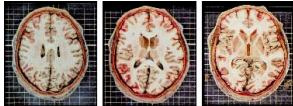
Atlas of the Human Brain

Mai, J.K., Assheuer, J. and Paxinos, G: Academic Press, San Diego

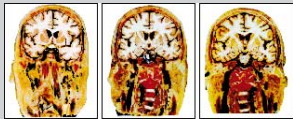


Macroscopic Atlas

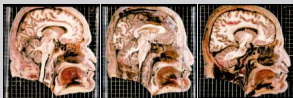
Horizontal sections



Coronal sections



Sagittal sections





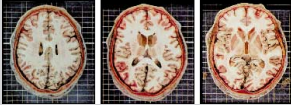
Atlas of the Human Brain

Mai, J.K., Assheuer, J. and Paxinos, G: Academic Press, San Diego

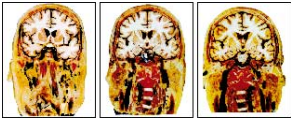


Macroscopic Atlas

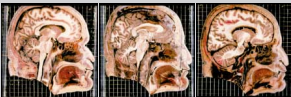
Horizontal sections



Coronal sections



Sagittal sections





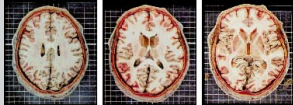
Atlas of the Human Brain

Mai, J.K., Assheuer, J. and Paxinos, G: Academic Press, San Diego

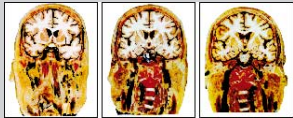


Macroscopic Atlas

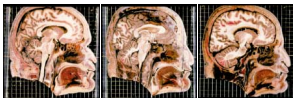
Horizontal sections



Coronal sections



Sagittal sections





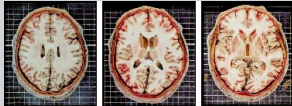
Atlas of the Human Brain

Mai, J.K., Assheuer, J. and Paxinos, G: Academic Press, San Diego

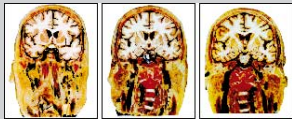


Macroscopic Atlas

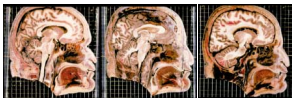
Horizontal sections



Coronal sections

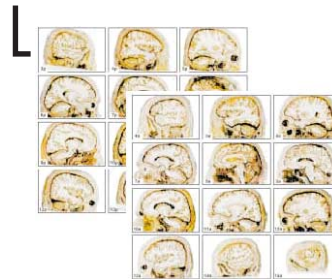


Sagittal sections



Please choose one of the following series ...

▶ from right side



▶ from left side



Atlas of the Human Brain

Mai, J.K., Assheuer, J. and Paxinos, G: Academic Press, San Diego



Support and Contributors

The production of the Atlas and CDROM were supported by:

**Grant from the "Freunde und Förderer der H.-Heine Universität",
Düsseldorf**

Grant from The University of New South Wales, Sydney

Back